

# Historic New England Summit 2022 October 13 and 14

WORCESTER, MA – The Historic New England Summit 2022 will take place Thursday and Friday October 13 and 14 at Mechanics Hall in downtown Worcester.

Historic New England's (HNE) mission to protect historic resources and support neighborhoods could not be timelier and more urgent. HNE knows that preservation works – it enhances livability, reduces waste, gives beauty and inspiration in our daily lives, and provides charm in our cities and towns which in turn attracts tourism and businesses.

The Summit will engage preservationists, conservationists, educators, civic and municipal leaders, urban planners, arts and culture organizations, philanthropists, community advocates, and students in open dialogue on timely issues that are relevant to urban, suburban, and rural communities.

Summit discussions will focus on New England while addressing topics that resonate nationally and globally as we work together to transform preservation into an accessible and essential ethic in community sustainability.

## Why the Summit?

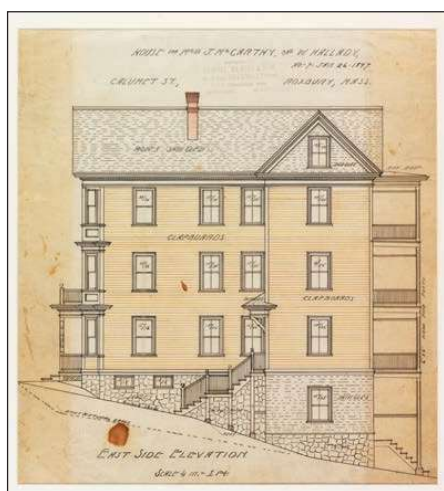
Preservation integrates the past with the present, and it informs the future by creating better places to live and work. Historic communities are resilient, with depth, pride, vitality, and connectedness, all of which attract investment.

The collaborative opportunities to advance this cause is enormous. New England's cities' and towns' historic districts, and our landscapes, parks, and museums, are all here to tell important stories – authentically, inclusively, and innovatively. In the 21st century, historic

preservation can lead in reimagining our communities to deliver new stories, experiences, and opportunities, and take on even more public-facing and civically engaged purposes.

The Historic New England Summit will present two days of exciting conversations that explore how 21st-century challenges and opportunities are transforming the fields of historic preservation, architecture, urban planning, conservation, arts and culture, museum studies, collections management, public history, and education. This highly interactive program will include keynote presentations by regional and national leaders, panel discussions, provocations, networking opportunities, awards, and more.

For more information and to register, visit [summit.historicnewengland.org](http://summit.historicnewengland.org)



East elevation of the McCarthy and Kallady three-decker, Roxbury, Massachusetts, 1897, Samuel Rantin and Sons Architects.. Collection of Historic New England.

## Continuous Shows & Markets

### REDWOOD COUNTRY FLEA MARKET

170 S. Turnpike Rd. Wallingford, CT 06492

OPEN EVERY FRIDAY • SATURDAY • SUNDAY

#### Bargains Galore!

Antiques, Collectibles, New & Used Tools, Jewelry, Coins, CDs, Crafts, DVDs, Clothes, Flowers, Produce, Groceries, Fresh Baked Goods, Gifts, Household Items

ALWAYS FREE ADMISSION • \$1 PARKING • 6AM TO 3PM  
RESTAURANT ON PREMISE  
203.269.3500

Fridays are Antiques & Collectibles Day

OPEN YEAR ROUND • Follow us on Facebook

### SILVER LAKE FLEA MARKET

441 Silver Lake Rd (Rt. 122) | Hollis, NH 03049  
603.465.7677 | [hollisflea.com](http://hollisflea.com)

Open Sundays  
April - October  
Weather Permitting

### FLEA MARKET INDOOR FLEA MARKETS COLLEGE MART FLEA MARKET

"JEWETT CITY" Conn.

OPEN SUNDAY ONLY 9-4

Located at the Slater Mill Mall, 39 Wedgwood Dr.  
Approx. 1 mi. off Rt. 395, from Mass Exit 22, right on Rt. 138  
From Norwich Exit 21, right on 12 to Rt. 138

FREE PARKING - FREE ADMISSION

OVER 900 TABLES

We are Continuously Expanding. Space Available

Newly expanded outdoor selling spaces for Sunday Dealer spaces available. Auctions every other Friday.

[www.Leoneauctioneers.com](http://www.Leoneauctioneers.com)

Bob and Sue Leone Res. (860) 642-6248 Bus. (860) 376-3935

### MOWER'S Saturday & Sunday Flea Market

Maple Lane Woodstock, NY

Open Saturdays, 8am - 5pm  
Sundays, 8am - 6pm

(845) 679-6744

email: [woodstockfleamarket@hvc.rr.com](mailto:woodstockfleamarket@hvc.rr.com)

Facebook or Google us

[mowersaturdayfleamarket.com](http://mowersaturdayfleamarket.com)  
[www.woodstockflea.blogspot.com](http://www.woodstockflea.blogspot.com)



## VENDORS WELCOME!

(Reservations not needed or taken)

- Early Spring thru June: Sat & Sun
  - July & Aug.: Wed, Thurs, Sat & Sun
  - September: Thurs, Sat, & Sun
  - Oct. thru mid-Nov.: Sat & Sun
- Buyer hours 8am to 3pm/ Open for Vendors at 7am

(All Markets are weather permitting & hours may vary)

Located at the Wellfleet Drive-In Theatre

51 State Hwy Rte 6, Wellfleet Massachusetts  
(508) 349-0541  
[www.WellfleetCinemas.com](http://www.WellfleetCinemas.com)

EVERY SUNDAY

10am - 5pm year round  
7th & C St. SE, Capitol Hill, Washington, DC

[EASTERNMARKET.NET](http://EASTERNMARKET.NET)

Contact: 202.215.6993  
[info@easternmarket.net](mailto:info@easternmarket.net)  
DiverseMarkets.net

produced by DIVERSE MARKETS MANAGEMENT

www.mansfielddrivein.com Jct. Rtes 31 & 32 Mansfield, CT

3 Big Screens Double Features

Eastern Ct's Largest Flea Market

LISTINGS: 860-423-4441

Flea Market now open every Sunday 8am-2pm  
Indoors, Outdoors, Rain or Shine  
INFO: 860-456-2578